

# Annual Report 2022

www.norfarchtrust.org.uk



# 2022



## in numbers

This last year has been incredibly busy, but we have achieved some fantastic outcomes. The biggest achievement must be the introduction of car parking charges at Burgh Castle Fort – with 5500 transactions to date already!

This helps to secure the long-term future of the Norfolk Archaeological Trust as the income will help us to continue to successfully manage our sites. Looking forwards, NAT will look to introduce a similar scheme at Caistor Roman Town. This combined with our objective to acquire a new 'at risk' archaeological site and create a visitor center will help us to create a sustainable future for the Trust.

*Natalie Butler, Director*

**3**   
**Grants**

**116**   
**Public tours**

**1,344**  
**Facebook followers on the NAT page**



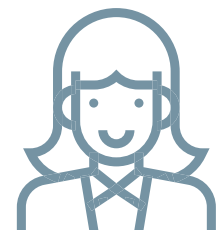
**387**  
**Social media posts**

**Over 250**  
site warden reports or site checks



**7**   
grazing licences

**38 New volunteers**



**9 sites with volunteer teams**

**3 TV appearances** 

**2**  **BBC Radio interviews**

**14** Newspaper articles (including one front page!) 

**7**   
**HODS events**

**1 new bridge**  
**1 new set of steps**

**3 new Trustees**  
**21 research volunteers**  
**550 Meetings**

# New bridge and steps at Caistor Roman Town



## **What 3 Words locations**

New Bridge w3w - [///stared.clearcut.island](https://stared.clearcut.island)

New Steps w3w - [///castle.merit.unless](https://castle.merit.unless)

*Above: The new bridge at  
Caistor Roman Town*

*Right: The new steps*

During 2022 there have been two fantastic new additions to help improve visitor access at Caistor Roman Town. The new bridge and steps have been funded through our management agreement with South Norfolk and Broadland Council who contracted the work to the Norwich Fringe Project.

The new bridge replaced a tired bridge on the marshes which had become worn, rotten, and tricky to use. The new bridge enables visitors to enjoy a walk down by the River Tas and through the marshes at Caistor Roman Town.

This area of the site is particularly popular with dog walkers and attracts an impressive range of waterfowl, particularly during the winter months. During the spring and summer, it is a favourite location for the ewes and their lambs.

The new steps have been built to provide easier visitor access from the church track to below the eastern rampart. This is a popular visitor route and during the winter months it becomes muddy and very slippery.

The new steps resolve this challenge and many visitors have already commented on how much easier it is to walk around that area of the Roman Town.



The Norwich Fringe Project is a local authority funded countryside management partnership, which works with volunteers and local communities to look after the countryside around Norwich. [norwichfringeproject.wordpress.com](http://norwichfringeproject.wordpress.com)



# Introducing our New Trustees

NAT are extremely excited and privileged to welcome three new Trustees to our Board. Their wealth of knowledge and enthusiasm for Norfolk's history will be hugely beneficial and we are extremely grateful for their time.

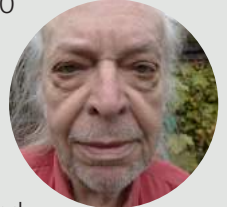
## Alan Squirrell MBE

Born and bred in Norfolk. Chartered Civil Engineer with varied career in Local Government, Oil and Gas Production, Not-for Profit and Voluntary sectors. Post graduate diploma in Management Studies, specialising in business performance improvement and change management. Honoured with an MBE in 2011 for voluntary services to the Norfolk Community. A lifelong amateur interest in archaeology and historic buildings.



## Andrew Rogerson BA, PhD, MCifA, FSA

After gaining a degree in History and Archaeology at Liverpool in 1970 he spent three years of digging in the UK before settling in Norfolk as a founding member of the Norfolk Archaeological Unit where he remained, through a series of the usual institutional name changes, until retirement in 2017. Though his first fieldwork project was the excavation of part of the Roman small town at Scole, his interests lie in the Anglo-Saxon and medieval periods. Amongst his significant, and published, excavations were Morning Thorpe Early Saxon cemetery, Middle Harling and Fullers Hill, Great Yarmouth. His final two decades of employment were largely taken up with the recording, for the Norfolk County Council's Historic Environment Record and the national Portable Antiquities Scheme, of finds made by metal detectorists and amateur archaeologists, a sector of archaeological activity in which Norfolk leads the field. He gained a PhD on the landscape archaeology and history of one Norfolk parish, Fransham, in 1996. This saw final publication in the East Anglian Archaeology monograph series in 2022.



## Alan Staton BA

Alan moved to Norfolk in 1987 to complete a degree in History and English Literature at the University of East Anglia. He made Norfolk his home and created a successful career in the county. Alan is an experienced marketer with widespread knowledge of how to engage different constituencies, promote brands and awareness. He has extensive experience of leading and managing interest groups. He has a lifelong passion for walking in the Norfolk and Suffolk countryside and visiting local historic sites.



# YANA Mental Health First Aid training

**Our Director, Natalie, and our Volunteer Coordinator, Jules were fortunate enough to be selected for the YANA MHFA training course earlier this year.**

This two-day training means that they are now better placed to be able to offer the right help in the workplace, in their friend and family networks and the wider rural community. Both Natalie and Jules found the training extremely useful and have used their new skills and knowledge many times throughout the year - with volunteers, contractors and the wider community.

YANA has been established to provide mental health support for the farming and rural community in East Anglia and Worcestershire. Their aim is to ensure there is at least one person someone struggling might come into contact with who is trained to notice and talk about it. They have trained 260 people and are currently setting dates for 2023 and welcome applications.



- Provides confidential support through their helpline & fully funded counselling
- Builds an understanding of mental health with talks, events, and awareness
- Invests in Mental Health First Aid training
- Promotes a national suicide prevention campaign known as 7 Tractor Facts to Save a Life

# This year's Challenges

NAT's sites attract tens of thousands of visitors each year. Most of these visitors enjoy our sites, discovering their history, taking photographs, and walking their dogs. We also have visits from school groups, universities, exercise groups, heritage tours, and boat excursions.

Unfortunately, as well as the positives, this quantity of visitors does bring about some additional challenges. NAT has experienced a significant surge in crime across all of our sites – this includes criminal damage, nighthawking (illegal metal detecting), anti-social behaviour, arson, theft, and verbal assault.



NAT works extremely closely with the Norfolk Constabulary who support us with hi-vis patrols, drone visits, problem solving and education. At Caistor Roman Town we have had no choice but to introduce Body-Cameras for our staff, volunteers and grazier as a prevention and evidence gathering tool.

As a positive, since introducing car parking



charges which included a ANPR camera at Burgh Castle Fort, the crime rate has significantly reduced. It is hoped that in the not so distant future, the same can be introduced at Caistor Roman Town and a similar reduction in crime will be achieved.

The local press has been very supportive in bringing awareness of our challenges and NAT has featured in the EDP, ITV Anglia and BBC Radio Norfolk throughout the year.

*Damage from illegal metal detecting at Caistor and St Benet's images, fire at Burgh Castle image, broken signs.*

## Introduction of car parking charges at Burgh Castle Fort

During Summer 2022, after finally getting planning permission granted, NAT introduced car parking charges at Burgh Castle Fort. Napier, the car park management company, designed a scheme sympathetic to the historical nature of its location. This includes clear, concise signage giving instructions on how to pay, a ANPR camera and a payment machine (both run on solar and/or wind energy). The introduction of charging will help support NAT's long-term future, by providing a source of income which can be used to help manage our sites. Since its installation, it has proven to be very popular – with visitors keen to support our sites by paying the car parking fee. It appears to have also had a very positive impact on the crime rate, which has significantly reduced. It is hoped that in the short term future, a similar scheme can be introduced at Caistor Roman Town.



**The Norfolk Archaeological Trust was started in 1923 by a Norwich solicitor and antiquarian, Basil Cozens-Hardy.**

He was convinced that there was a demand for an organisation in Norfolk which was committed to the ownership and care of monuments and buildings. The aims of the Archaeological Trust were set out in its 1923 Memorandum of Articles:

*"To promote and foster the discovery, excavation, preservation, recording and study of sites and objects of archaeological and/or historical importance within the County of Norfolk for the public benefit."*

Initially, NAT focused primarily on historic buildings and earthwork sites came later. Its first property it saved was Augustine Steward's House in Tombland, Norwich.

During 2023, NAT will be celebrating its centenary with a range of special events and activities.

## Funding

NAT has been extremely lucky this year to be awarded grants from the Arnold Clark Community Fund, Persimmon Homes Community Champions funding and The Blakemore Foundation for new signage and wildlife cameras which will be introduced at our sites during 2023. NAT is thankful for their kind donations and support.



# Community meet and greet at Tasburgh

**This year NAT trialled a Community meet and greet event at Tasburgh on a Saturday during the Summer.**

The aim of the event was to give the local community an opportunity to come and talk to us and understand the work we undertake in the management of the site.

The site warden volunteers supported Natalie and Jules, and using the NAT gazebo, presented displays on the history of the site, as well as information on joining us as a member or volunteer. It was very successful, approximately 50 visitors joined us including the parish council and church representatives. It attracted new volunteers and members, donations, guidebook sales and members of the local community. Due to its success, it is planned to run more of these events during 2023.

## A Helping Hand

Volunteers play a vital role at NAT, with both onsite and virtual teams. As part of planned developments, Volunteer Co-ordinator Jules has been growing volunteering at our largest sites. Many companies now offer community activity days, either for individuals or departments, to support local charities and organisations. With the growing interest in, and importance of, green spaces, NAT has been creating opportunities and building relationships.

Taking place between Spring and late October, teams are invited to support NAT through a range of practical tasks including painting gates and fences, litter picks, conservation activity and minor repairs. This additional support helps us maintain, conserve and improve the visitor access and experience, whilst keeping our special places in good condition. Physical tasks and being outdoors boosts morale and gives a sense of achievement. As well as getting an excellent workout, corporate volunteers contribute to the important work we do which has direct benefits to visitors and wildlife.

Burgh Castle Fort and Caistor Roman Town saw teams from Aviva, Marsh McLennan and Virgin Money making a real difference in 2022. Volunteers reported increased wellbeing and pride at being able to help, as well as the ability to spend time with colleagues where homeworking has reduced in person staff interactions.

Future plans include increasing the number of volunteer teams, expanding the sites supported by group volunteering and widening the range of activities on offer - such as professional skills volunteering and pro bono support.

Team volunteering is open to all groups, not just corporate. Volunteers are supported on the day by NAT staff, with plenty of time to admire the splendid views with a cup of tea!

To find out more contact Jules Armour, Volunteer Co-ordinator at [julesarmour@norfarchtrust.org.uk](mailto:julesarmour@norfarchtrust.org.uk)



 **nat**  
tasburgh  
enclosure  
Community meet  
and greet at Tasburgh

### Keeping in touch

We will always be pleased to hear from you about any aspect of the Trust's work, especially if you are interested in volunteering at one of our sites email: [info@norfarchtrust.org.uk](mailto:info@norfarchtrust.org.uk)

#### You can also follow us on social media:

Twitter: @NorfArchTrust,

Instagram: [norfolkarchaeologytrust](https://www.instagram.com/norfolkarchaeologytrust)

Facebook: [facebook.com/NorfArchTrust](https://www.facebook.com/NorfArchTrust)

[facebook.com/burghcastlefort](https://www.facebook.com/burghcastlefort)

[facebook.com/stbenetsabbeynorfolk](https://www.facebook.com/stbenetsabbeynorfolk)

We also regularly update the website news and events pages [www.norfarchtrust.org.uk](http://www.norfarchtrust.org.uk).

Text and photographs by Natalie Butler unless otherwise stated. Design by Starfish <http://www.starfishlimited.co.uk>

  
**norfolk archaeological trust**